

FITTING INSTRUCTIONS

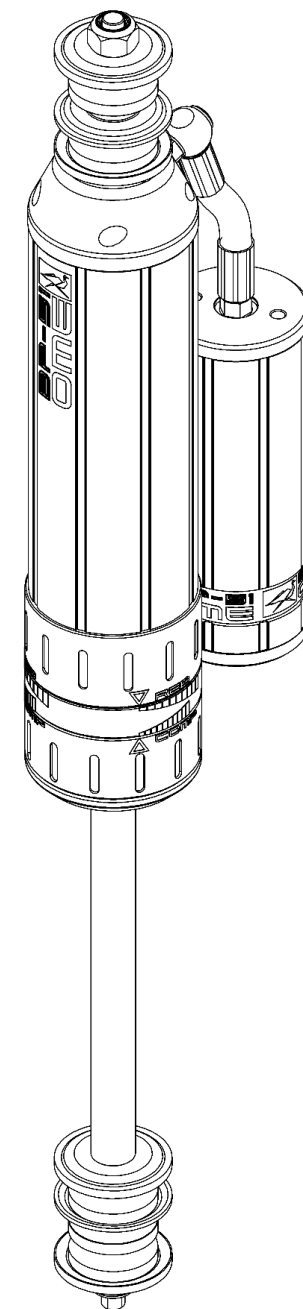
BP5160009 & BP5160042

SUITS TOYOTA LANDCRUISER 76/78/79 SERIES FRONT

WARNING

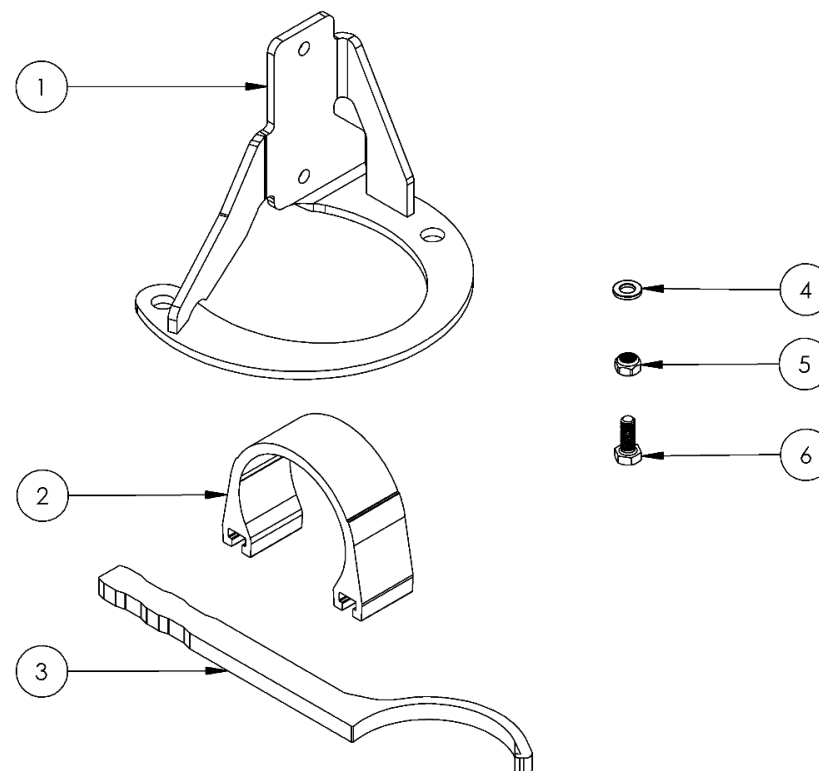
- ◆ This product must be installed exactly as per these instructions using only the hardware supplied.
- ◆ In the event of damage to any suspension component, contact your nearest authorised ARB stockist. Repairs or modifications to the suspension system components must not be attempted.
- ◆ Do not use this product for any vehicle make or model, other than those specified by ARB.
- ◆ Do not remove labels from suspension components.
- ◆ This product or its fixing must not be modified in any way.
- ◆ The installation of this product may require the use of specialized tools and/or techniques
- ◆ It is recommended that this product is only installed by trained personnel
- ◆ These instructions are correct as at the publication date. ARB Corporation Ltd. cannot be held responsible for the impact of any changes subsequently made by the vehicle manufacturer
- ◆ During installation, it is the duty of the installer to check correct operation/clearances of all components
- ◆ Work safely at all times

Note: These fitting instructions should be read in conjunction with the vehicle workshop manual.



FITTING KIT CONTENTS – VM80010006

Item	Description	Qty	Spare Part No.
1	FRONT RESI BRACKET RIGHT (SHOWN)	1	VE10020001RSP
	FRONT RESI BRACKET LEFT	1	VE10020001LSP
2	RESI CLAMP	2	VE10010003SP
3	ADJUSTER TOOL	1	VC10010071SP
4	M6 WASHER	2	VE70020005SP
5	M6 NYLOCK NUT	2	VD60010003SP
6	M6 X 16MM BOLT	2	VD60030003SP

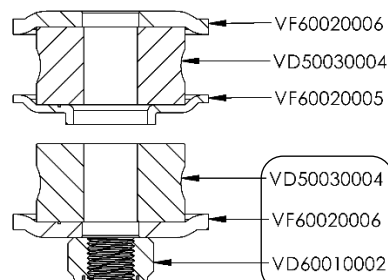
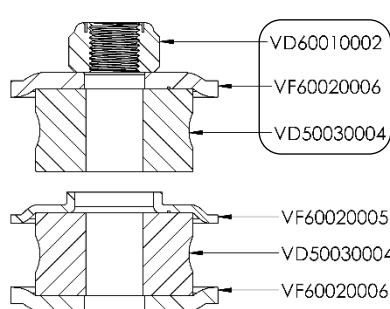


DAMPER MOUNTING SEQUENCE

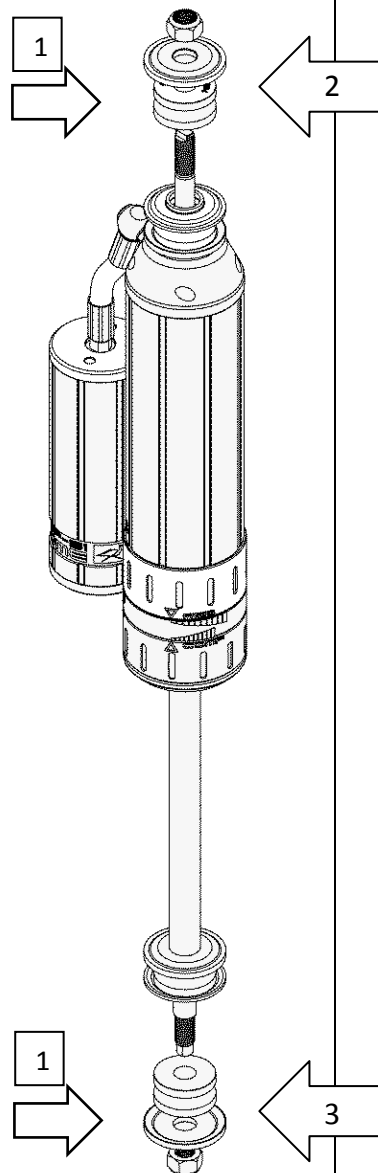
The BP-51 needs to be fitted with the suspension in droop. Front sway bar and diff breather can be removed to gain more droop.

1. Remove nut, retaining washer and bush from top and bottom as shown in the diagram.

BUSH KIT VM50010005



BUSH KIT VM50010005



Top Mount

2. Fit the damper to the vehicle top mount first.

Fit the top mount such that the hose leaving the damper is pointing towards the outside of the vehicle.

Fit the bush, retaining washer and secure with the nut as shown by the diagram.

Torque to 70 N.m (52 lbf ft).

Bottom Mount

3. Fit the damper to the vehicle bottom mount.

Fit the bush and retaining washer and secure with the nut as shown by the diagram.

Torque to 70 N.m (52 lbf ft).

RESERVOIR MOUNTING SEQUENCE

Fit M6 bolts to mounting bracket and secure with nyloc nut and flat washer. Secure finger tight only at this stage.

Remove nuts securing spring centre then fit reservoir mounting bracket and secure using the original hardware.

Torque to 37 Nm (27 ft.lb).

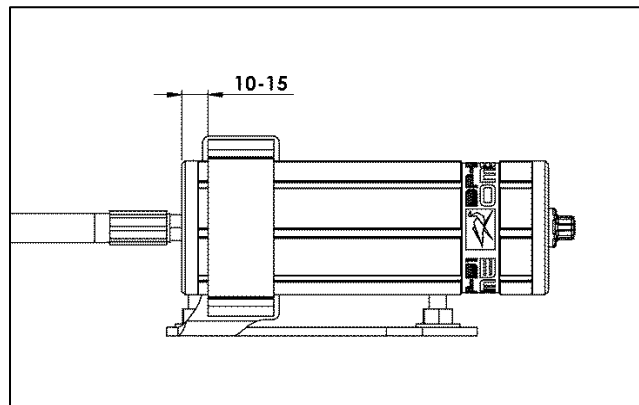
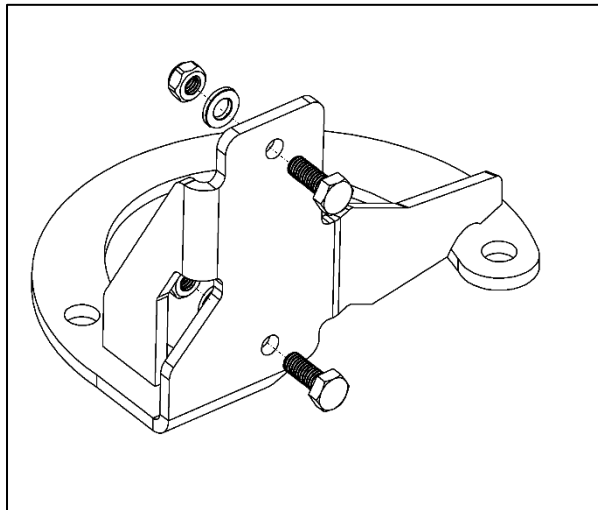
Fit the mounting saddle to the reservoir and slide over the heads of the bolts in the mounting plate. Centralise the saddle on the plate and adjust the position of the reservoir as shown.

Ensure the reservoir clears the vehicle body and that the hose has a clean arc with no kinks.

Note position of reservoir to clamp shown by the photos as a guide.

Fasten hardware securely and torque where specified.

(RH SHOWN)



DAMPING ADJUSTMENT

These dampers have been set in the factory to be used for a vehicle with certain load.

If your load or accessory fitment differs, use the table below as a guide for recommended compression and rebound adjuster settings.

Part Number	Front Accessories	Compression	Rebound
BP5160009	Bar & Winch	4-8	6-10
	Bar only	2-6	5-9
	No accessories	0-4	4-8
Factory setting		4	5
BP5160042	Bar & Winch	4-8	6-10
	Bar only	2-6	5-9
	No accessories	0-4	4-8
Factory setting		0	4

SPECIFICATIONS

1	BP5160009	Extended Length	516 mm
		Compressed Length	319 mm
2	BP5160042	Extended Length	516 mm
		Compressed Length	319 mm

SPARE PARTS

Refer to Service And Part manual section:

- For BP5160009 see **BP-51 S&P 3.1-BP5160009**
- For BP5160042 see **BP-51 S&P 3.1-BP5160042**

